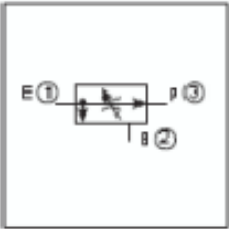
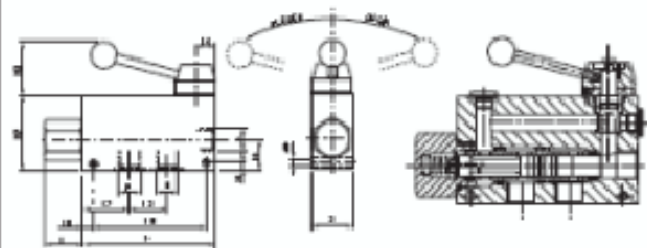


Three-Way, Combination Type, Pressure Compensated Flow Regulators

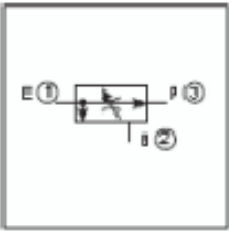
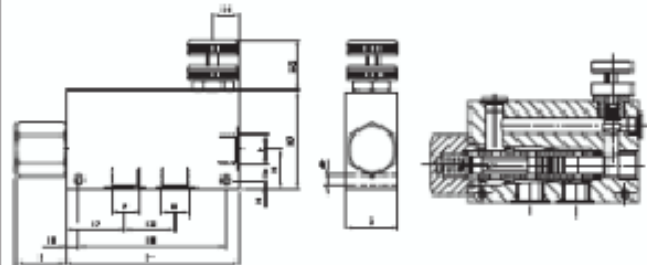
Stock No.	Description	Max. Flow	Max. Pressure	Port Size	Page Ref. O.C. Cat.	List Price
DM.42.03.50.03	VRFC3C-L	90 LPM	210 BAR	1/2"	8.41.02	



Technical Data	
Max. working pressure	210 bar
QE = Max. admitted inlet flow "E" port l/min	
QP = Max. delivery in priority "P" port l/min	

50	135	10	25	44	54	155	35	40	90	35	7	8.5	90	150	3/4	2.60
40	110	10	20	37	45	130	38	40	70	28	6	6.5	55	90	1/2	1.40
40	110	10	20	37	45	130	38	40	70	28	6	6.5	30	55	3/8	1.40
S	L6	L5	L4	L3	L2	L1	L	H3	H2	H1	H	F	QP	QE	Y	Weight kg

DM.42.03.70.02	VRFC3C	55 LPM	210 BAR	3/8"	8.41.01
DM.42.03.70.03		90 LPM		1/2"	
DM.42.03.70.04		150 LPM		3/4"	
DM.42.03.70.05		380 LPM		1"	



Technical Data	
Max. working pressure	210 bar
QE = Max. admitted inlet flow "E" port l/min	
QP = Max. delivery in priority "P" port l/min	

70	130	10	27	56.5	48	150	54	40	130	65	10	8.5	190	380	1	4.35
50	135	10	25	44	54	155	35	40	90	35	7	8.5	90	150	3/4	2.50
40	110	10	20	37	45	130	38	40	70	28	6	6.5	55	90	1/2	1.30
40	110	10	20	37	45	130	38	40	70	28	6	6.5	30	55	3/8	1.30
S	L6	L5	L4	L3	L2	L1	L	H3	H2	H1	H	F	QP	QE	Y	Weight kg