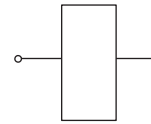


## PROPORTIONAL COIL - TUBE Ø 19 36 W

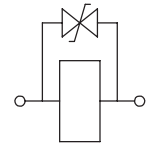
- Wire insulation class. . . . . **H (>185°C)**
- ED \* . . . . . **100%**
- Coil power at 20° C. . . . . **36 W**
- Max current at 24 V dc. . . . . **0,9 A**
- Max current at 12 V dc . . . . . **1,8 A**
- Ambient temperature . . . . . **-20 +40° C**
- Weight . . . . . **0,28 Kg**

\* ON/OFF use allowed only with ED 50% max (ED 50% according to the DIN VDE 0580)

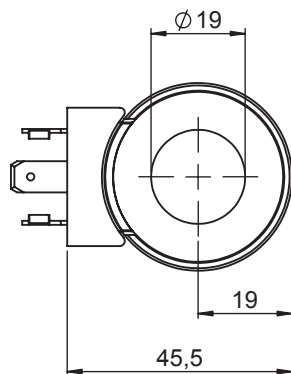
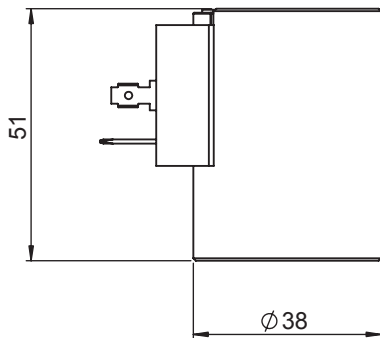
### ELECTRIC CIRCUITS



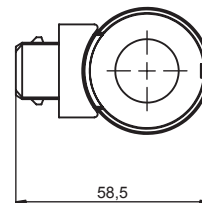
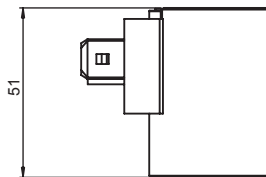
STANDARD



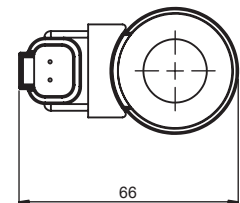
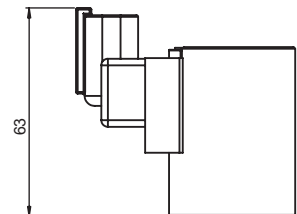
WITH DIODE  
(BI-DIRECTIONAL)



### AMP - JUNIOR



### DEUTSCH DT4



CONNECTOR	PROTECTION CLASS	COIL THERMAL INSULATION CLASS	VOLTAGE [V]	RESISTANCE [Ω]	CIRCUIT	ORDERING CODE
DIN 43650	IP65*	H	12 V dc	3,9	STANDARD	<b>098001190</b>
DIN 43650	IP65*	H	24 V dc	14,5	STANDARD	<b>098002190</b>
DEUTSCH DT 4	IP67	F	12 V dc	3,9	WITH DIODE	<b>098101190</b>
DEUTSCH DT 4	IP67	F	24 V dc	14,5	WITH DIODE	<b>098102190</b>
AMP - JUNIOR	IP65*	F	12 V dc	3,9	WITH DIODE	<b>098201190</b>
AMP - JUNIOR	IP65*	F	24 V dc	14,5	WITH DIODE	<b>098202190</b>
AMP - JUNIOR	IP65*	H	26 V dc	18,8	WITH DIODE	<b>098212192</b>

\* Protection index with standard connector

