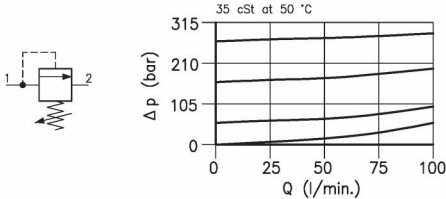
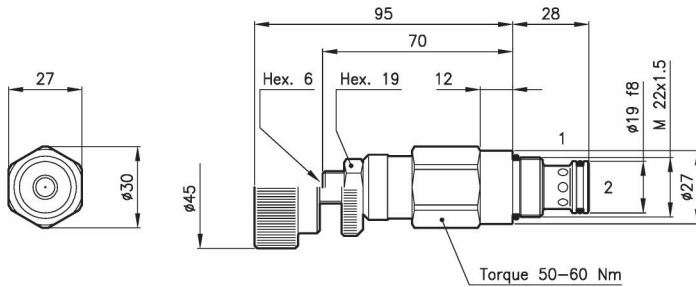


**Technical features**



Cavity	(For dimensions see catalogue 17.000)	S 30/2
Max. flow	(l/min.)	90
Max. inlet pressure	(bar)	350
Max. pressure on line 2	(bar)	350
Fluid viscosity range	(cSt)	2.8 – 380
Fluid temperature range	(°C)	-20 +80
Mass	(kg)	0.270
Cracking pressure 95% of setting value		
Reseat pressure 75% of setting value		
Cracking pressure defined with 1 l/min.		
Standard setting obtained with 10 l/min.		
Hydraulic fluid; mineral oil HM and HV		ISO 6074
Recommended filtration; 19/15 ISO 4466		(25 μ absolutes)
Standard seals in Polyurethane and Buna N		

**Dimensions**



**Ordering informations**

**LPB 30/D-N**

**LPB 30** = Valve type



Standard springs

Type	Setting range	Factory set
<b>U</b>	= 10 – 105 bar	70 bar
<b>D</b>	= 70 – 210 bar	140 bar
<b>T</b>	= 140 – 350 bar	280 bar

Adjustment type

**N** = Standard adjustment



**V** = Handknob adjustment



Codes:

LPB 30/U-N	31 011 104
LPB 30/D-N	31 011 105
LPB 30/T-N	31 011 106
LPB 30/U-V	31 011 245
LPB 30/D-V	31 011 247
LPB 30/T-V	31 011 248
External seals kit	90 620 103

LPA 30 valves can be assembled on standard bodies 30-L0 series; for dimensions see catalogue 16.010