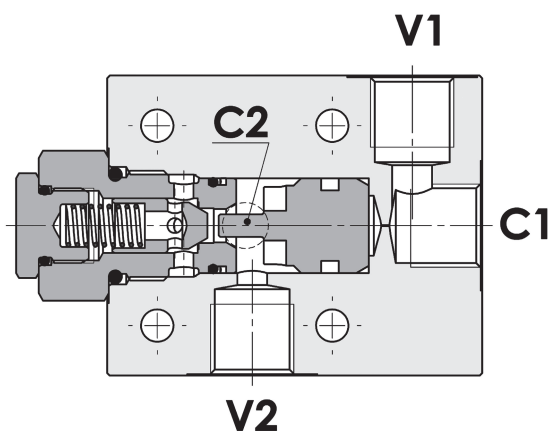
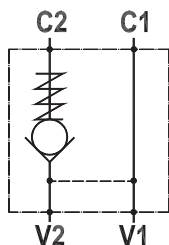


**Valvola di blocco pilotata semplice, montaggio a flangia**  
**Single pilot operated check valve, gasket mounted**

Rev.01-2010/02



**SPECIFICHE TECNICHE**

**Materiali:** corpo in alluminio (a richiesta in acciaio). I componenti interni sono in acciaio trattato termicamente.

**Portata:** fino a 85 l/min

**Pressione max.:** vedi tabella pag.2

**Pressione di apertura:** standard 2,5 bar, a richiesta 5-10 bar

**TECHNICAL SPECIFICATIONS**

**Materials:** body in aluminum (steel on request). Internal components in hardened steel.

**Rated flow:** up to 85 l/min

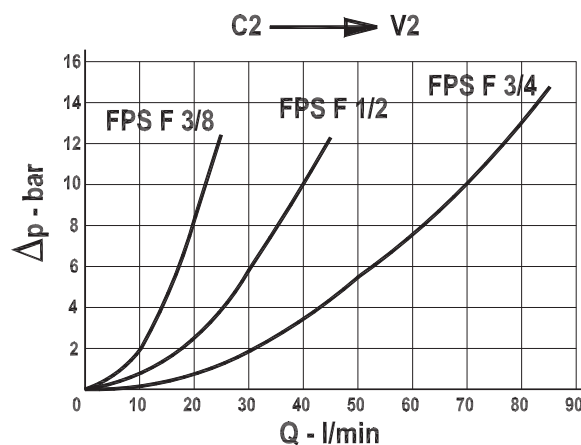
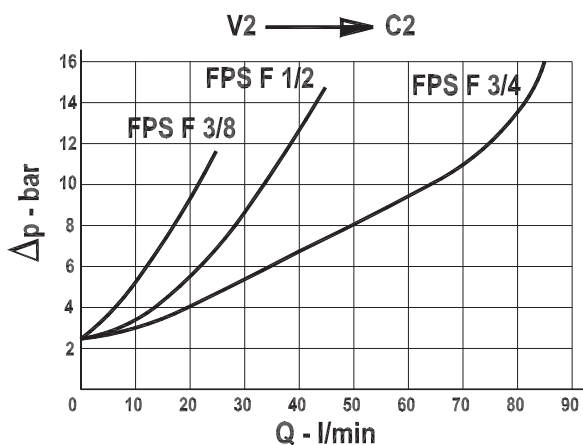
**Max. pressure:** see data sheet page 2

**Cracking pressure:** 2,5 bar standard, 5-10 bar on request

**DIAGRAMMA PERDITE DI CARICO - PRESSURE DROP CURVES**

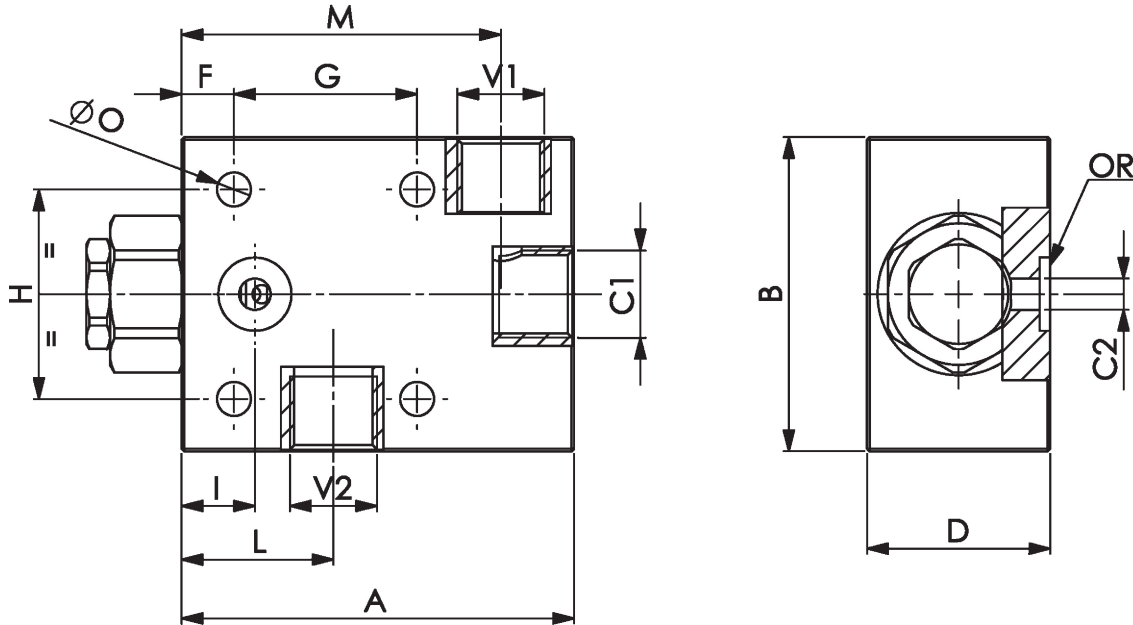
Viscosità olio 24 mm<sup>2</sup>/sec. (3,5 °E)  
 Temperatura 50 °C

Oil viscosity 24 mm<sup>2</sup>/sec. (3,5 °E)  
 Temperature 50 °C



**Valvola di blocco pilotata semplice, montaggio a flangia**  
**Single pilot operated check valve, gasket mounted**

Rev.01-2010/02



TIPO TYPE	PORTATA MAX. MAX FLOW	PRESS. MAX. MAX PRESSURE	V1-C1 V2	C2	A	B	D	F	G	H	I	L	M	N	O	RAPP. DI PILOTAGGIO PILOT RATIO	PESO WEIGHT
	L/MIN	BAR	BSPP	mm	mm	mm	mm	mm	mm	mm	mm	mm	mm	mm	mm		Kg
FPS F 3/8"	30	250 – 350(S)	3/8"	6	75	60	34	10	35	40	14	29	61	18.5	6.5	1 : 7	0.470 – 1.150(S)
FPS F 1/2"	45	250 – 350(S)	1/2"	8	95	70	34	15	40	40	22.5	38	76	15	8.5	1 : 3.5	0.600 – 1.600(S)
FPS F 3/4"	85	250 – 350(S)	3/4"	14	135	90	49	15	65	50	30	57.5	113	14	10.5	1 : 4	1.700 – 4.100(S)

Queste valvole, data la loro configurazione, non consentono una elevata contropressione allo scarico

*These valves, owing to their configuration, can't allow for an high discharge pressure*

	FPS F 3/8"	FPS F 1/2"	FPS F 3/4"
Guarnizione OR – OR seal	9,19x2,62	15,54x2,62	18,64x3,53

**ESEMPIO DI ORDINAZIONE - ORDERING CODE EXAMPLE**

**F P S F 3 / 8 2 , 5 G \* \***

<p>3/8 – 3/8" BSPP          * 1/2 – 1/2" BSPP          3/4 – 3/4" BSPP          Connessioni - Port sizes</p> <p>2.5 bar (std) – 5 bar – 10 bar          * Pressione apertura ritegno, omettere se std          Cracking pressure, omit if std</p>	<p>Guarnizioni – Seals:          V=Viton *          Omettere se BUNA-N – Omit if BUNA-N</p> <p>Materiale corpo: omettere se alluminio, S=acciaio *          Body material: omit if aluminum, S=steel</p> <p>Guarnizione sul pilota, omettere se non richiesta *          With o-ring on pilot valve, omit if not requested</p>
---	--