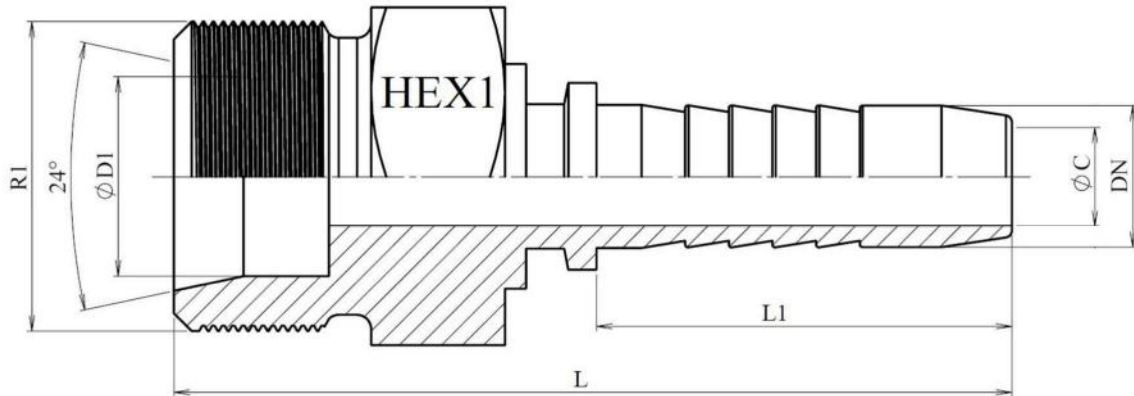
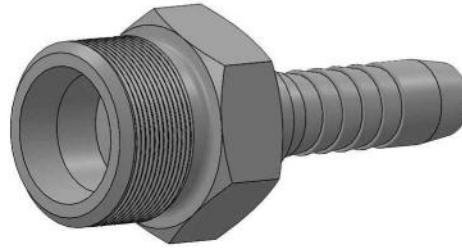


Standard series

Metric fittings

## Metric Male stud 24° cone

Stainless Steel AISI 316-L



Part nº	DN	ØD1	Serie	R1	L	L1	HEX 1	ØC
84203120604	1/4"	6	L	M12x1.5	47.5	28	12	4
84203140804	1/4"	8	L	M14x1.5	49	28	17	4
84203161004	1/4"	10	L	M16x1.5	52	28	17	4
84203161005	5/16"	10	L	M16x1.5	52.3	28	17	5.5
84203161006	3/8"	10	L	M16x1.5	54	29.5	17	7
84203181204	1/4"	12	L	M18x1.5	53	28	19	4
84203181205	5/16"	12	L	M18x1.5	53.5	28	19	5.5
84203181206	3/8"	12	L	M18x1.5	55	29.5	19	7
84203221506	3/8"	15	L	M22x1.5	54	29.5	24	7
84203221508	1/2"	15	L	M22x1.5	55.5	30.5	24	9.5
84203261808	1/2"	18	L	M26x1.5	57.5	30.5	27	9.5
84203261810	5/8"	18	L	M26x1.5	61.3	34	27	12
84203302212	3/4"	22	L	M30x2	69	39	32	15
84203362816	1"	28	L	M36x2	78	47	41	19
84203453520	1"1/4	35	L	M45x2	91	54.5	46	26
84203524224	1"1/2	42	L	M52x2	95,5	37,5	55	32
84203140604	1/4"	6	S	M14x1.5	51	28	14	4
84203160804	1/4"	8	S	M16x1.5	52	28	17	4
84203181004	1/4"	10	S	M18x1.5	52	28	17	4
84203181005	5/16"	10	S	M18x1.5	52.3	28	17	5.5
84203181006	3/8"	10	S	M18x1.5	54	29.5	17	7
84203201205	5/16"	12	S	M20x1.5	58.3	28	22	5.5
84203201206	3/8"	12	S	M20x1.5	60	29.5	22	7
84203221406	3/8"	14	S	M22x1.5	59.5	29.5	24	7
84203221408	1/2"	14	S	M22x1.5	61	30.5	24	9.5
84203241608	1/2"	16	S	M24x1.5	61.5	30.5	27	9.5
84203302010	5/8"	20	S	M30x2	69.3	34	32	12

Standard series

Metric fittings

## Metric Male stud 24° cone

Stainless Steel AISI 316-L

Part n°	DN	ØD1	Serie	R1	L	L1	HEX 1	ØC
<b>84203302012</b>	3/4"	20	S	M30x2	75.5	39	39	15
<b>84203362512</b>	3/4"	25	S	M36x2	79	39	39	15
<b>84203362516</b>	1"	25	S	M36x2	87	47	47	19
<b>84203423016</b>	1"	30	S	M42x2	90	47	47	19
<b>84203523820</b>	1"1/4	38	S	M52x2	101	54.5	54.5	26