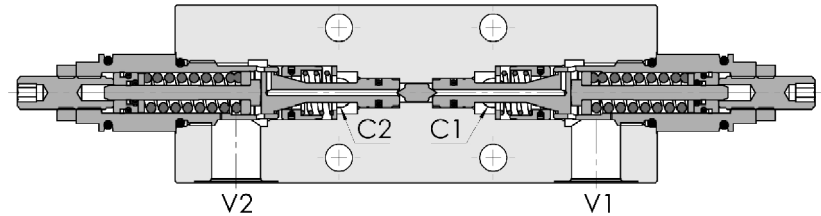
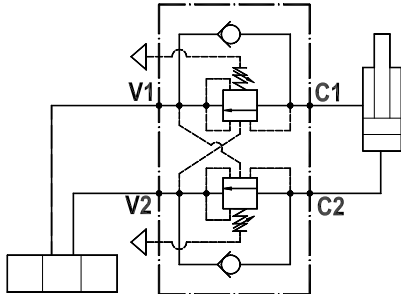


**Valvola overcenter doppia parzialmente bilanciata, montaggio a flangia**
Partially balanced dual overcenter valve, gasket mounted

Rev.05-2020/11

**SPECIFICHE TECNICHE**

Materiali: corpo in acciaio zincato. I componenti interni sono in acciaio trattato termicamente.

Portata max.: 70 l/min

Taratura max.: 350 bar

Rapporto di pilotaggio: 1 : 4.25 (a richiesta 1 : 2.7, 1 : 8, 1 : 11)

Regolazione pressione: mediante vite

Campo di regolazione pressione: vedere pag.02

TECHNICAL SPECIFICATIONS

Materials: body is steel made zinc plated. Internal parts are in hardened steel.

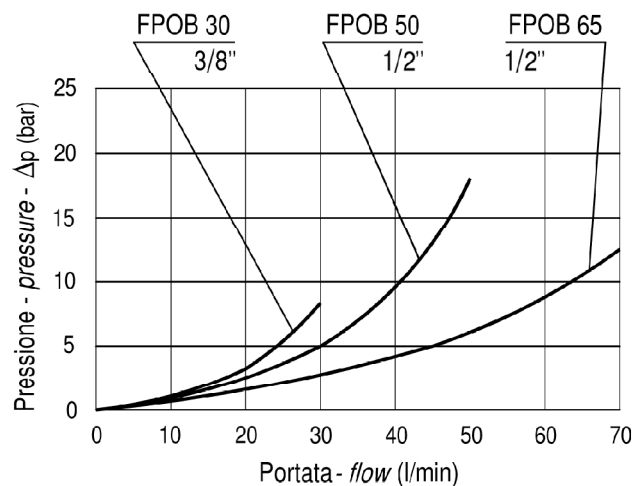
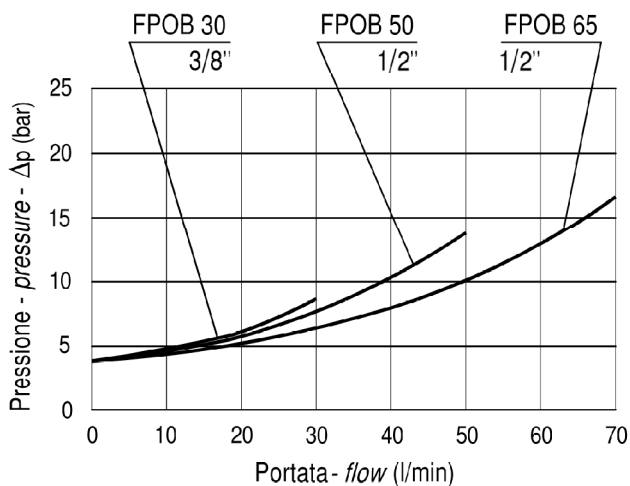
Rated flow: up to 70 l/min

Max. setting: 350 bar

Pilot ratio: 1 : 4.25 (1 : 2.7, 1 : 8 and 1 : 11 on request)

Adjustment means: leakproof screw adjustment

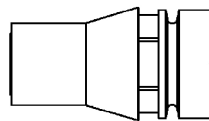
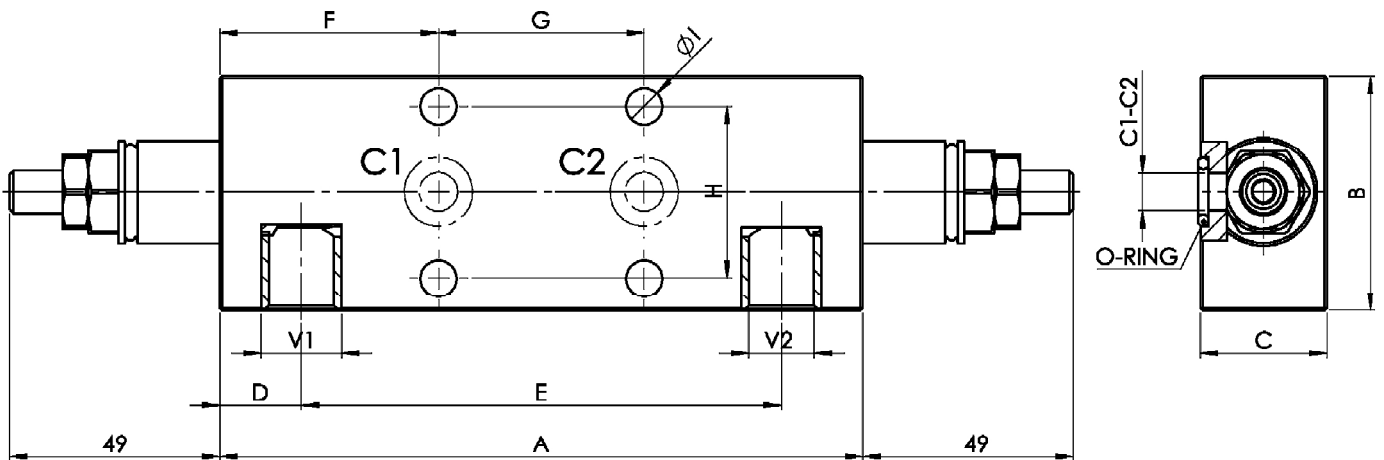
Adjustable pressure range: see page 02

DIAGRAMMA PERDITE DI CARICO
PRESSURE DROP CURVES**V ► C****C ► V**



Valvola overcenter doppia parzialmente bilanciata, montaggio a flangia
Partially balanced dual overcenter valve, gasket mounted

Rev.05-2020/11



Cappello antimanomissione.
Codice di ordinazione: 9006800010

Tamperproof cap.
Ordering code: 9006800010

MOLLE - SPRINGS				*
Codice Code	Rapp. pil. Pilot ratio	Campo taratura min.-max. bar Adjustable pressure range bar	Increment. press. bar/giro vite Pressure increase bar/tum	Taratura standard bar Standard setting bar
20	1 : 2.7	70 - 230	70	170
	1 : 4.25	60 - 210	55	
	1 : 8	60 - 220	40	
	1 : 11	60 - 250	70	
35	1 : 2.7	120 - 330	80	280
	1 : 4.25	80 - 350	95	
	1 : 8	100 - 350	65	
	1 : 11	80 - 350	120	

TIPO TYPE	V1-V2	C1-C2	O-RING	A	B	C	D	E	F	G	H	I	PESO WEIGHT
	BSPP	mm	mm	mm	mm	mm	mm	mm	mm	mm	mm	mm	Kg
FPOB * D 3/8 2F	3/8"	9	10.77x2.62	150	55	29.5	19	112	51	48	40	8.5	2.600
FPOB * D 1/2 2F	1/2"	9	10.77x2.62	150	65	34.5	19	112	51	48	40	8.5	3.100

ESEMPIO DI ORDINAZIONE - ORDERING CODE EXAMPLE

F P O B * **D** * **2 F** * * *

* $\frac{30}{+}$ / $\frac{50}{+}$ / $\frac{65}{+}$:
 Portata massima . *Rated flow*

* $\frac{3}{8}$. $\frac{3}{8}$ " BSPP
 $\frac{1}{2}$. $\frac{1}{2}$ " BSPP (50/65)
 Connessioni - *Port sizes*

* $\frac{20}{+}$ / $\frac{35}{+}$:
 Campi di taratura pressione - *Adjustable pressure range*

Guarnizioni . *Seals:*
 V=Viton *
 Omettere se BUNA-N . *Omit if BUNA-N*

B = 1 : 8, C = 1 : 11, D = 1 : 2.7
 Rapporto di pilotaggio . *Pilot ratio* *
 Omettere se standard . *Omit if standard*