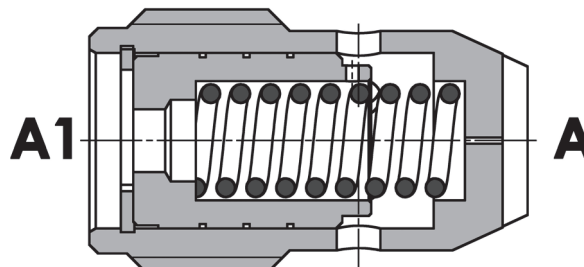
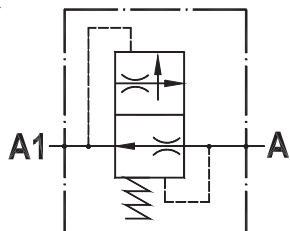


Valvola controllo discesa compensata
Pressure compensated flow restricting valve

Rev.03-2010/08



SPECIFICHE TECNICHE

Materiali: tutti i componenti sono in acciaio

Portata max.: vedere "tabella valori portata controllata"

Pressione max.: 300 bar

TECHNICAL SPECIFICATIONS

Materials: all the components are steel made

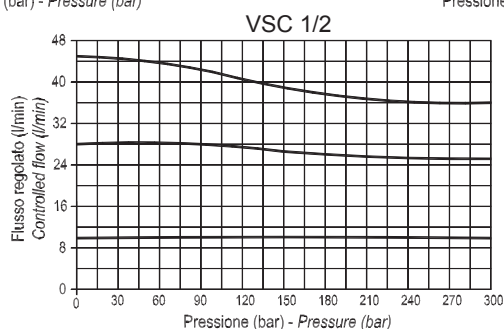
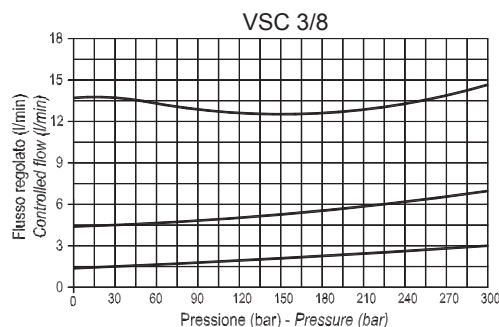
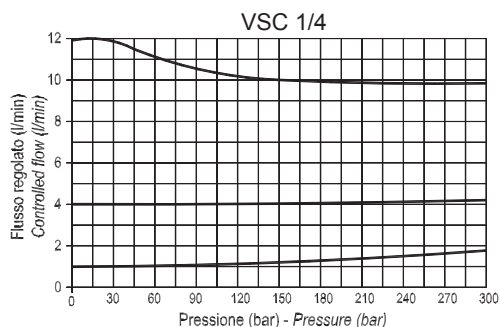
Rated flow: see "controlled flow setting list"

Max. pressure: 300 bar

DIAGRAMMA COMPENSAZIONE - COMPENSATION CURVES

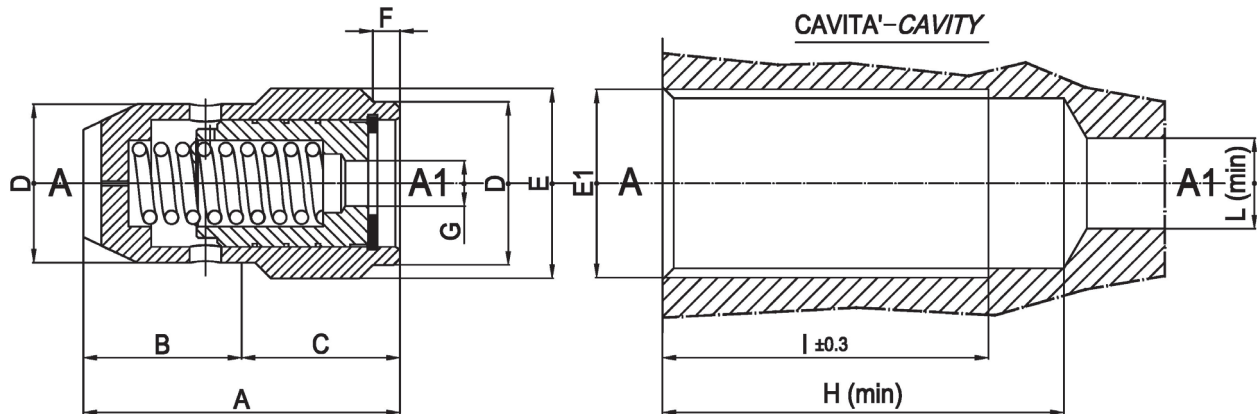
Viscosità olio 24 mm²/sec. (3,5 °E)
 Temperatura 50 °C

Oil viscosity 24 mm²/sec. (3,5 °E)
 Temperature 50 °C



Valvola controllo discesa compensata
Pressure compensated flow restricting valve

Rev.03-2010/08



TIPO TYPE	A	B	C	D	E	F	G	PESO WEIGHT	CAVITA' - CAVITY				COPPIA DI SERRAGGIO INSTALLATION TORQUE
									E1	H	I	L	
VSC-1/4"	27	15	12	11	1/4"	3	FORO DOSATORE (VEDI TABELLA) - ORIFICE (SEE LIST)	0,012	1/4"	40	36	8	2
VSC-3/8"	28	14	14	14	3/8"	4		0,025	3/8"	44	39	11	3
VSC-1/2"	35	19	16	18	1/2"	3		0,050	1/2"	51	47	14	4

Disponibili a richiesta corpi maschio-femmina e femmina-femmina, vedere sezione W100 -
 Available on request male-female and female-female housing, see section W100

ESEMPIO DI ORDINAZIONE - ORDERING CODE EXAMPLE

V S C 3 / 8 1 1

1/4 - 1/4" BSPP
 3/8 - 3/8" BSPP
 1/2 - 1/2" BSPP
 Connessioni - Port sizes

VSC 1/4	Q (L/min)	1.5	2	3	4	5	6	7	8	9	10
	ØG (mm)	0.75	1.00	1.25	1.50	1.75	2.00	2.25	2.50	2.75	3.00
VSC 3/8	Q (L/min)	1	2	3	4	5	6	8	10	11	12
	ØG (mm)	0.75	1.25	1.75	2.00	2.25	2.50	3.00	3.50	4.00	4.25
VSC 1/2	Q (L/min)	8	11	14	17	22	27	32	40	47	-
	ØG (mm)	2.00	2.50	3.00	3.50	4.00	4.50	5.00	5.50	6.00	-